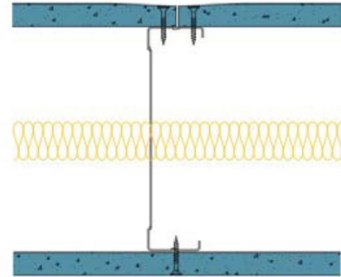


146-B-54F(25) - SPEEDLINE System Data Sheet - Version V1 (24-10-23)

SPEEDLINE 146mm 'C' Stud Partition @600mm
Ctrs, with BG Gyproc 15mm SoundBloc F each
side, 25mm APR



System Performance Breakdown

Fire Resistance:

BS476 Part 22:1987:

Test Ref & Date or Applied Ref & Report:

Max Height:

Thickness:

Duty Grade: BS 5234: Part 2:1992:

Sound Insulation:

60/60 Minutes (Integrity/Insulation).

BMT/FEP/F14106 - BRE Report P102396-1011A

Refer to Speedline Specification Clause

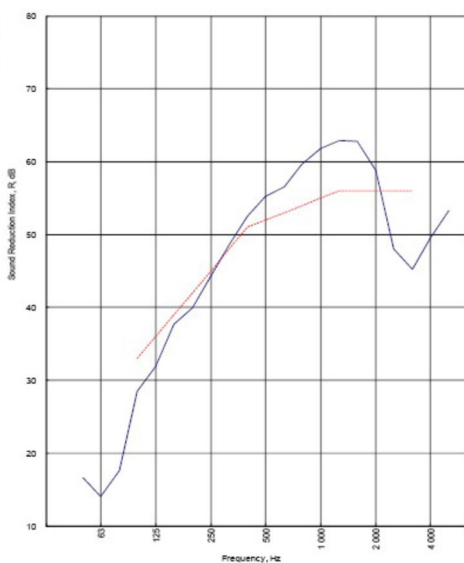
178 mm. (At Base Track, Excluding Finishes)

Heavy - Annexes A-F

52 R_w dB, Date Tested or Assessed Against - 146-B-54(25)

Test Code:
H19434AA
Test Date:
02/02/2016

Freq. Hz	R dB
50	16.6
63	14.0
80	17.6
100	28.5
125	32.0
160	37.7
200	39.9
250	44.3
315	48.6
400	52.6
500	55.3
630	56.5
800	59.7
1000	61.8
1250	62.9
1600	62.8
2000	58.8
2500	48.0
3150	45.2
4000	49.5
5000	53.3



Rating according to BS EN ISO 717-1:2013	R_w (C;Ctr) = 52 (-3;-7) dB
Evaluation based on laboratory measurement results obtained by an engineering method:	Max dev. 10.8 dB at 3150 Hz
	$C_{50-3150}$ = -7 dB $C_{50-5000}$ = -6 dB $C_{100-5000}$ = -3 dB
	$C_{10-50-3150}$ = -18 dB $C_{10-50-5000}$ = -18 dB $C_{10-100-5000}$ = -7 dB

TESTED AT ONE OF THE UKAS
ACCREDITED LABORATORIES
BELOW

B.T.C
(H-Ref on Graph)

B.R.E

AIRO

S.R.L



Customer: Voestalpine Metsec Plc

BTC 19434A: Page 11 of 14



SPEEDLINE Drywall Systems, Adsetts House, 16 Europa View, Sheffield Business Park, Sheffield, S9 1XH.

Tel: 0114 231 8030.

Email: enquiries@speedlinedrywall.co.uk

(As per the requirements set out in ISO/IEC 17025:2017 regarding test data the results stated have been carried out by voestalpine Metsec plc as part of the contract to supply Speedline Metal Sections to SIG Plc)